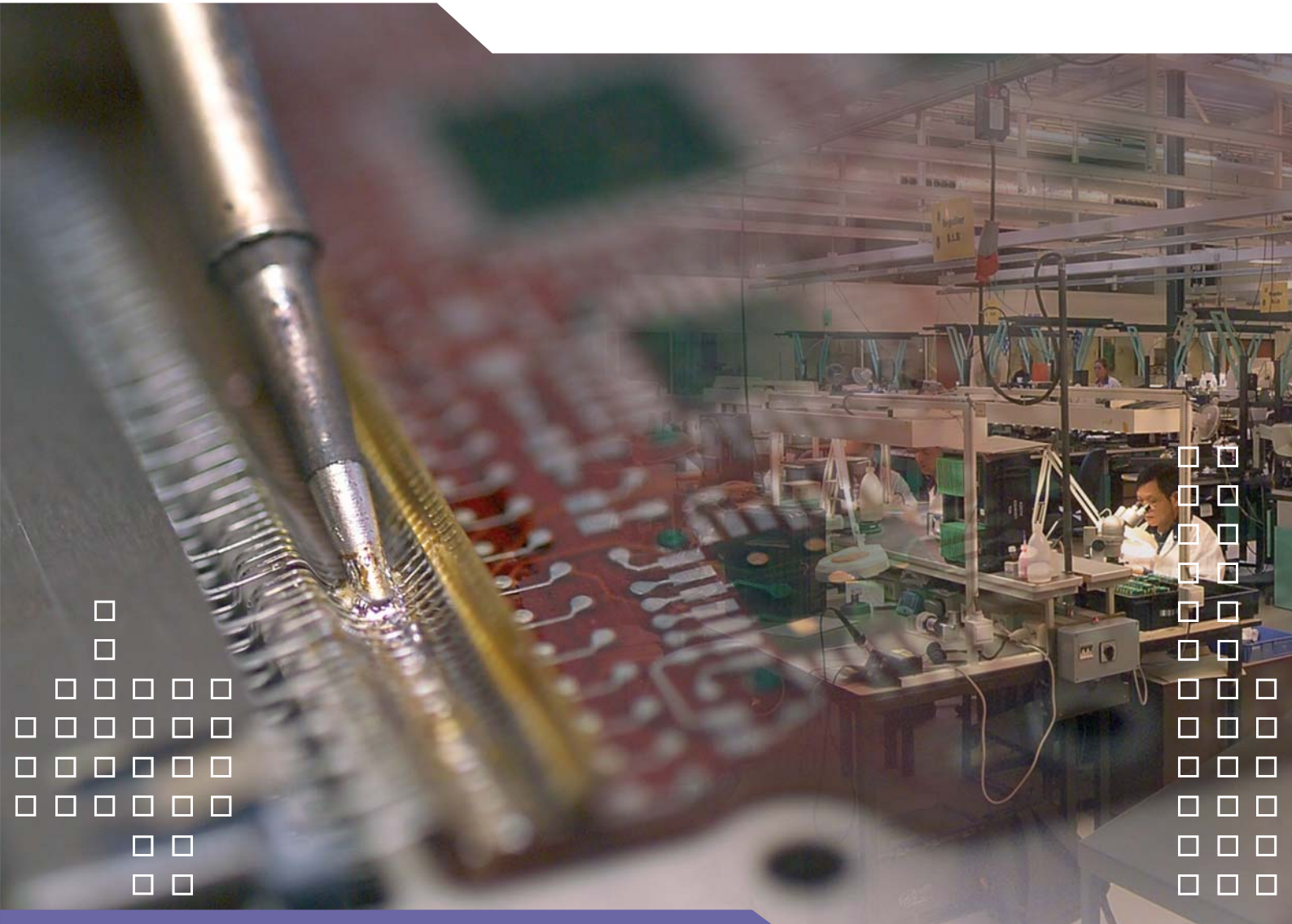


# THALES



## Industrial Services and Business-to-Business

Thales, a global services provider



## Thales - a reliable partner for industrial services and business-to-business activities

Thales is a globally active business specialising in high-tech electronics for military and commercial uses. We are committed to innovation and quality. Since our foundation in 1918, we have been continuously involved in the development of communications and high-tech systems, and have been responsible for many innovative developments in this field.

### Custom-made to your specifications

On the basis of our considerable experience, we are able to use our valuable knowledge and expertise in the military and civil arena to offer manufactured Printed Circuit Boards (PCBs) to companies within the professional sector and the offset market. We manufacture PCBs custom-made to our customers' specifications, offering them either 'built to spec' or 'built to print' services. We can manage the entire supply chain, from purchasing, logistics and planning to testing, packaging and even delivery to the customer.

### Specialists in advanced applications and complete solutions

For the design and customisation of applications to our clients' specifications, we have a team of experts in specification, design and development. We ensure that the designs we offer to our clients are delivered as specified and within budget. In order to achieve this, we constantly maintain contact

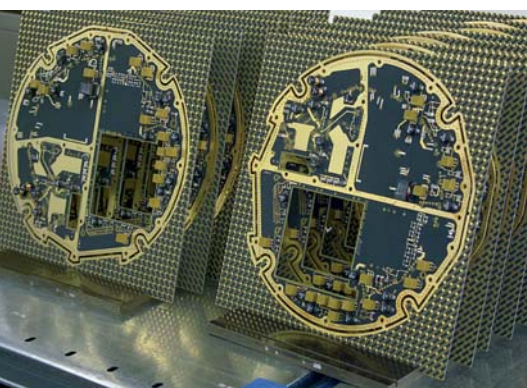
with our clients and make full use of our own R&D department and support from our global organisation. Throughout the entire process, we place considerable emphasis on focusing on what our clients want and on keeping them fully informed at all times. Our clients can also be assured of excellent aftersales support and continuing professional advice. As part of our package of aftersales services, Obsolescence Management may, of course, also be included.

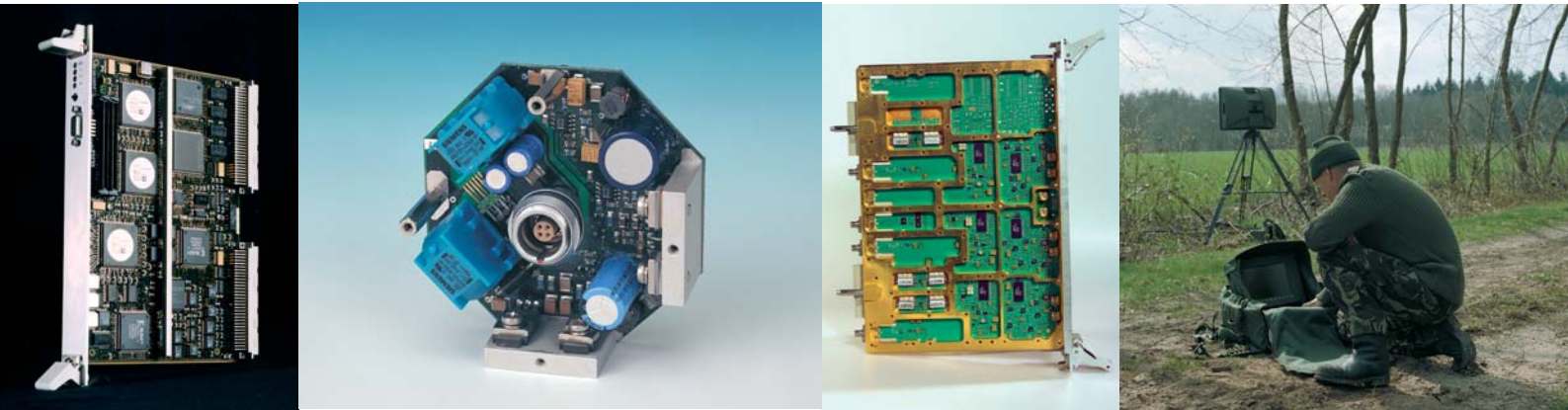
### A complete range of services

Thales Land & Joint Systems in Huizen, the Netherlands is, among other things, the centre of excellence for the development and manufacture of Printed Circuit Boards. In addition to having the most modern facilities for the manufacture of PCBs using Surface Mounted Technology (SMT), we also mount, repair and test parts (Surface Mounted Devices & Leaded) in Huizen for all Thales branches in northern Europe and for external clients.

### Flexible production, cutting costs

The Thales SMT production line is particularly suitable for producing small to medium-sized quantities of PCBs and for 'rapid prototyping'. With our flexible production line, we can satisfy our customers' wishes, whether for manual or fully automatic production, and for any quantities. You, as our client, are saved the expense of investing in SMT and of having





to test equipment yourself. If necessary, we can also train your staff by giving them 'on the job' training. With the benefit of our worldwide network, we can also assist our clients in choosing suppliers and materials in order to develop and buy materials in the most cost- and time-efficient manner possible.

### State-of-the-art technology and stringent quality requirements

In order to provide our clients with a state-of-the-art system that precisely matches the specified requirements and the individual wishes of the client, Thales always employs the latest technology. We continually invest in developing new Surface Mounted Technologies and in training our highly-qualified staff. This is all supported by our own R&D department and our worldwide organisation. By working together closely as a team, often together with our international colleagues, we can add an extra dimension to the quality of our service.

### International certification

Thales meets the highest military, professional and commercial QA/QC standards. But in order to differentiate ourselves yet further, we have, as one of the first companies in our field, obtained ISO 9001, 2000 and 14001 certification, as well as AQAP-110 and AQAP-150 certification. SMDs are produced to our clients' specifications according to the IPC2 or the IPC3 norms and the ANSI-J-STD-001B norm.

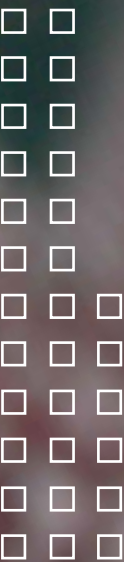
### Global leadership

Constantly looking to the future, Thales is always working to increase, renew and expand its portfolio of services. In this way, we are able to completely satisfy our clients' wishes, time after time. This is why Thales has grown into the successful business it is today, with a leadership position in the world of military and professional civil systems.

*Thales Land & Joint Systems Division in the Netherlands is part of the international Thales Group.*



© THALES COMMUNICATIONS B.V. and/or its suppliers. This information carrier contains proprietary information which shall not be used, reproduced or disclosed to third parties without prior written authorization by THALES COMMUNICATIONS B.V. and/or its suppliers, as applicable.



THALES CRYOGENICS B.V.  
P.O. Box 6034 NL-5600 HA EINDHOVEN, THE NETHERLANDS  
Tel.: +31 40 250 36 03 Fax: +31 40 250 37 77  
[www.thales-cryogenics.nl](http://www.thales-cryogenics.nl)

THALES OPTRONICS B.V.  
P.O. Box 5083 NL-2600 GB DELFT, THE NETHERLANDS  
Tel.: +31 70 414 58 00 Fax: +31 70 414 58 58  
[www.thales-optronics.nl](http://www.thales-optronics.nl)

THALES COMMUNICATIONS B.V.  
P.O. Box 88 NL-1270 AB HUIZEN, THE NETHERLANDS  
Tel.: +31 35 524 82 48 Fax: +31 35 524 82 42  
[info.tc@nl.thalesgroup.com](mailto:info.tc@nl.thalesgroup.com) [www.thales-communications.nl](http://www.thales-communications.nl)